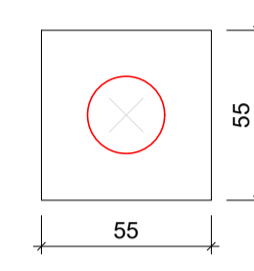
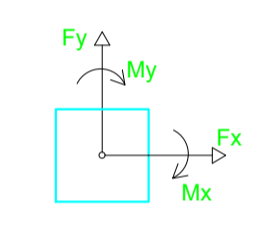
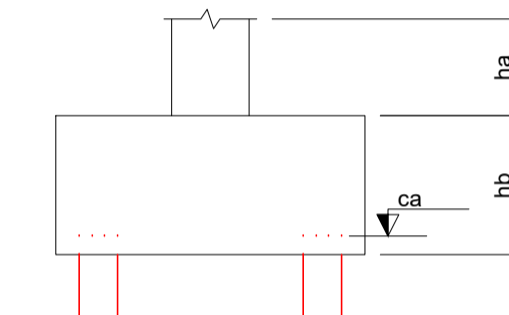


Planta de localização  
escala 1:50

B1=B2=B3=B4=B5=B6  
B7=B8=B9=B10=B11  
B12=B13=B14=B15=B16  
B17=B18=B19=B20=B21  
B22=B23=B24=B25=B26  
B27=B28=B29=B30=B31  
B32 (1ø25)



Legenda dos blocos  
escala 1:25



Nome	Seção (cm)	X (cm)	Y (cm)	Pilar		Fundação				Bloco				Base tub. (cm)		
				Carga Máx. (tf)	Carga Mín. (tf)	Mx (kgf.m)	My (kgf.m)	Fx (tf)	Fy (tf)	Lado B (cm)	Lado H (cm)	h0 / ha (cm)	h1 / hb (cm)		ne	de (cm)
P1	15x25	7.50	1820.50	6.0	5.4	0	0	0.2	0.2	55	55	0	55	1	25	-120
P2	15x25	486.50	1820.50	7.4	6.6	0	0	0.1	0.1	55	55	0	55	1	25	-120
P3	15x25	982.50	1820.50	5.2	4.6	0	0	0.3	0.2	55	55	0	55	1	25	-120
P4	15x25	7.50	1461.45	6.7	5.9	0	0	0.2	0.2	55	55	0	55	1	25	-120
P5	15x25	486.50	1460.50	10.3	9.0	0	0	0.1	0.1	55	55	0	55	1	25	-120
P6	15x25	982.50	1460.50	7.0	6.2	0	0	0.3	0.2	55	55	0	55	1	25	-120
P7	15x25	1497.50	1435.50	6.1	5.5	0	0	0.2	0.3	55	55	0	55	1	25	-120
P8	15x25	1975.00	1440.50	7.6	6.8	0	0	0.1	0.1	55	55	0	55	1	25	-120
P9	15x25	2482.50	1435.50	6.9	6.2	0	0	0.3	0.3	55	55	0	55	1	25	-120
P10	15x25	7.50	954.95	8.1	7.2	0	0	0.3	0.2	55	55	0	55	1	25	-120
P11	15x25	477.50	955.50	10.1	8.7	0	0	0.1	0.1	55	55	0	55	1	25	-120
P12	15x25	982.50	955.50	11.3	10.0	0	0	0.3	0.2	55	55	0	55	1	25	-120
P13	15x25	1497.50	960.50	10.3	9.1	0	0	0.2	0.3	55	55	0	55	1	25	-120
P14	15x25	1975.00	955.50	10.1	8.8	0	0	0.1	0.1	55	55	0	55	1	25	-120
P15	15x25	2482.50	960.50	7.5	6.6	0	0	0.3	0.3	55	55	0	55	1	25	-120
P16	15x25	7.50	621.55	4.9	4.4	0	0	0.4	0.1	55	55	0	55	1	25	-120
P17	15x25	482.50	620.50	8.5	7.6	0	0	0.2	0.1	55	55	0	55	1	25	-120
P18	15x25	982.50	621.10	3.9	3.4	0	0	0.3	0.1	55	55	0	55	1	25	-120
P19	15x25	1367.60	662.50	4.0	3.4	0	0	0.5	0.3	55	55	0	55	1	25	-120
P20	15x25	1852.60	657.50	4.6	3.9	0	0	0.3	0.2	55	55	0	55	1	25	-120
P21	15x25	2167.60	657.50	4.6	4.0	0	0	0.1	0.2	55	55	0	55	1	25	-120
P22	15x25	2482.50	657.50	2.7	2.3	0	0	0.2	0.2	55	55	0	55	1	25	-120
P23	15x25	7.40	287.50	4.2	3.7	0	0	0.3	0.2	55	55	0	55	1	25	-120
P24	15x25	477.40	287.50	7.9	7.0	0	0	0.1	0.1	55	55	0	55	1	25	-120
P25	15x25	982.50	287.50	7.9	6.9	0	0	0.3	0.2	55	55	0	55	1	25	-120
P26	25x25	1367.60	292.50	9.6	8.6	0	0	0.5	0.3	55	55	0	55	1	25	-120
P27	15x25	1852.60	292.50	7.9	7.0	0	0	0.3	0.2	55	55	0	55	1	25	-120
P28	15x25	2167.60	292.50	5.4	4.7	0	0	0.2	0.2	55	55	0	55	1	25	-120
P29	15x25	2482.60	292.50	6.9	6.1	0	0	0.2	0.2	55	55	0	55	1	25	-120
P30	15x25	7.50	12.50	4.8	4.3	0	0	0.1	0.1	55	55	0	55	1	25	-120
P31	15x25	332.40	7.50	7.8	7.0	0	0	0.4	0.1	55	55	0	55	1	25	-120
P32	15x25	982.50	12.50	6.0	5.4	0	0	0.4	0.1	55	55	0	55	1	25	-120

Localização no eixo X	
Coordenadas (cm)	Nome
7.40	P23
7.50	P1, P4, P10, P16, P30
332.40	P31
477.40	P24
477.50	P11
482.50	P17
486.50	P2, P5
982.50	P3, P6, P12, P18, P25, P32
1367.60	P19, P26
1497.50	P7, P13
1852.60	P20, P27
1975.00	P8, P14
2167.60	P21, P28
2482.50	P9, P15, P22
2482.60	P29

Localização no eixo Y	
Coordenadas (cm)	Nome
1825.50	P2
1820.50	P1, P3
1461.45	P4
1460.50	P5, P6
1440.50	P8
1435.50	P7, P9
960.50	P13, P15
955.50	P11, P12, P14
954.95	P10
662.50	P19
657.50	P20, P21, P22
621.55	P16
621.10	P18
620.50	P17
292.50	P26, P27, P28, P29
287.50	P23, P24, P25
12.50	P30, P32
7.50	P31

Estacas		
Simbologia	de (cm)	Quantidade
	25	32

	CLIENTE	UNIVERSIDADE ESTADUAL DE MATO GROSSO DO SUL			
	TÍTULO	Laboratório de Solos - Mundo Novo	PROJETO	ESTRUTURAL	
LOCAL:	BR 163 MUNDO NOVO - MS				
AUTOR DO PROJETO:	WAGNER LUIZ MANARA - CREA 27.190/D		PROPRIETÁRIO		
RESPONSÁVEL TÉCNICO:			UNIVERSIDADE ESTADUAL DE MATO GROSSO DO SUL CNPJ: 86.891.363/0001-80		
REFERÊNCIA:	LOCAÇÃO DAS ESTACAS		FOLHA Nº / AP	ARQ-AP	
				01/18	
ESCALA	INDICADAS	UNIDADE	ARQUIVO	REVISÃO	VISTO
		(METRO)	(Estrutural - Completo)	(R00)	
			DATA	DESENHO	
			04/07/2025	(TIABG)	