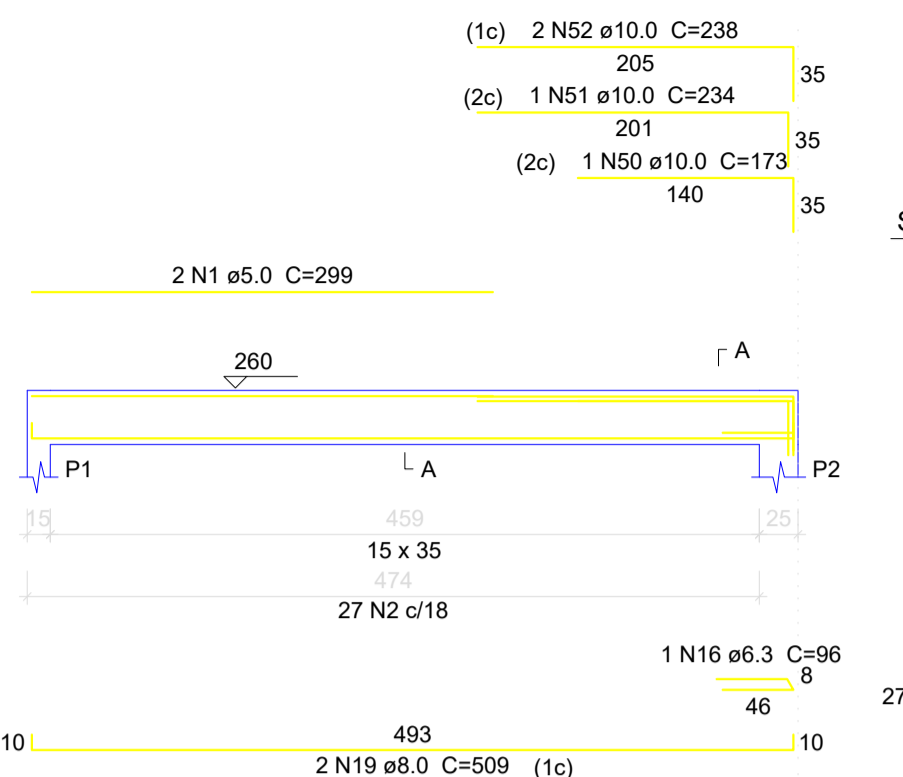
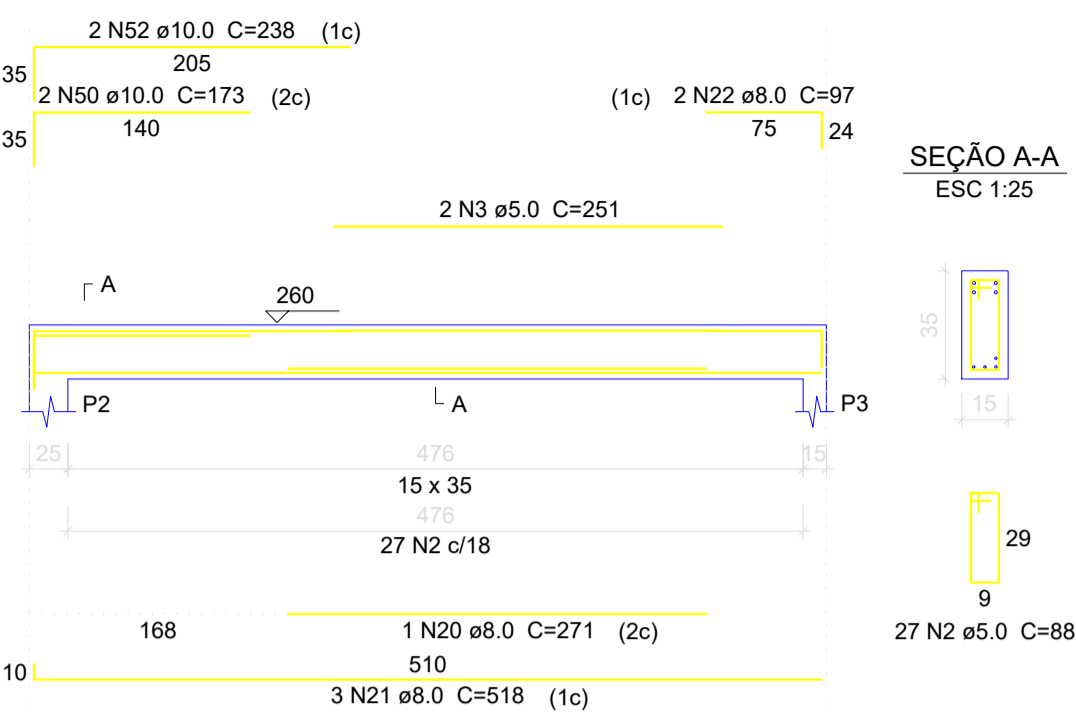


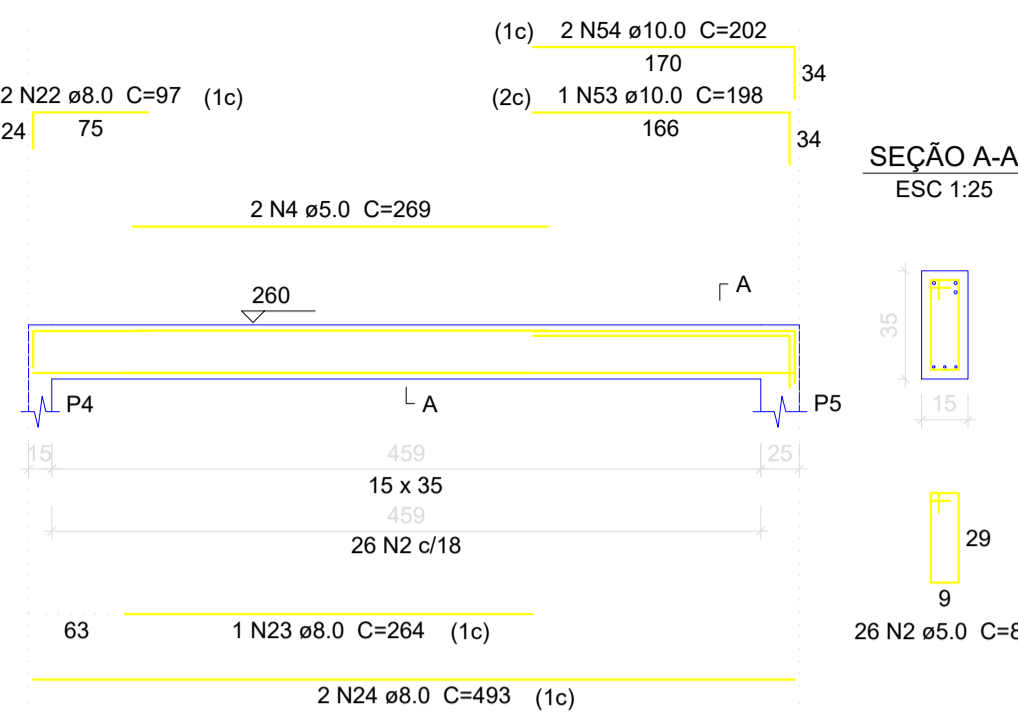
V1 ESC 1:50



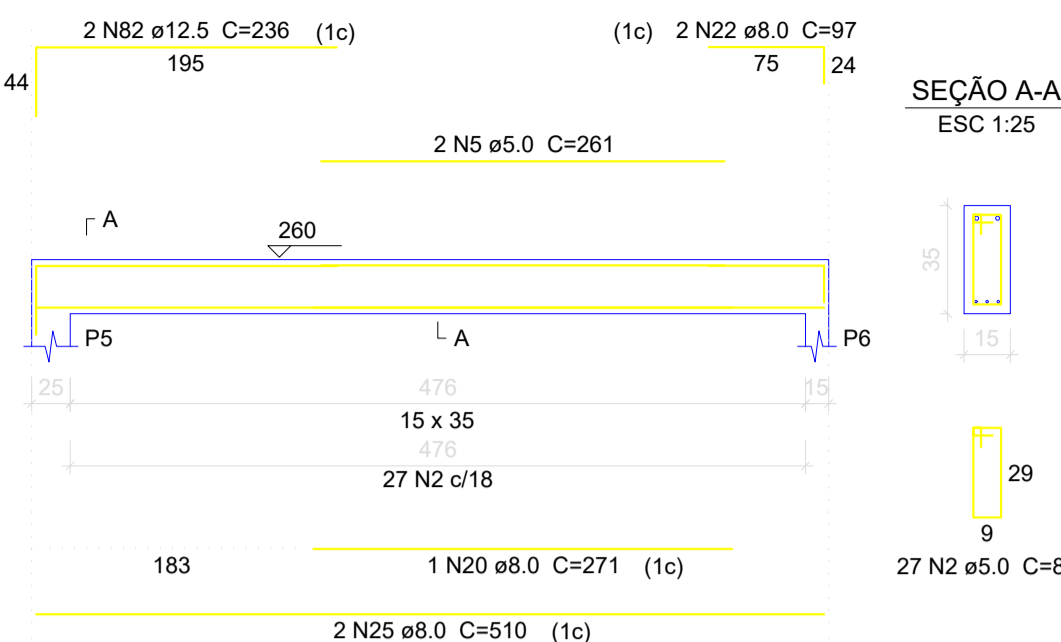
V2 ESC 1:50



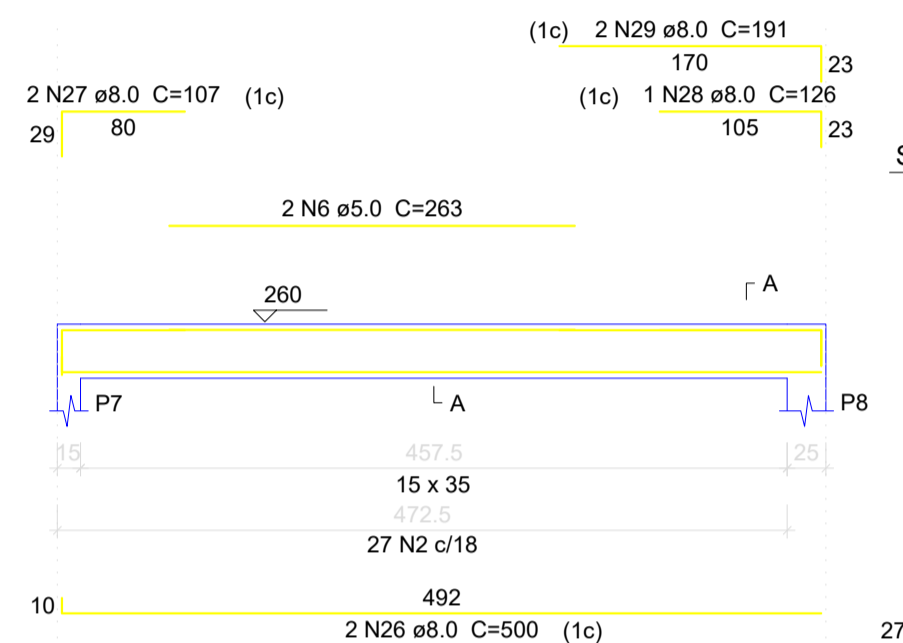
V3 ESC 1:50



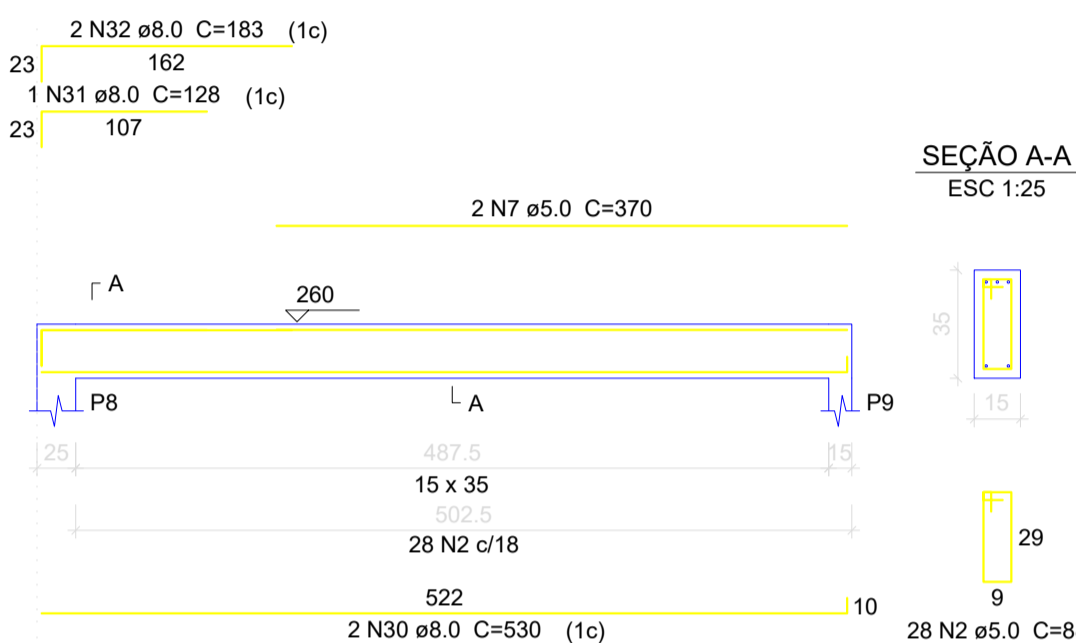
V4 ESC 1:50



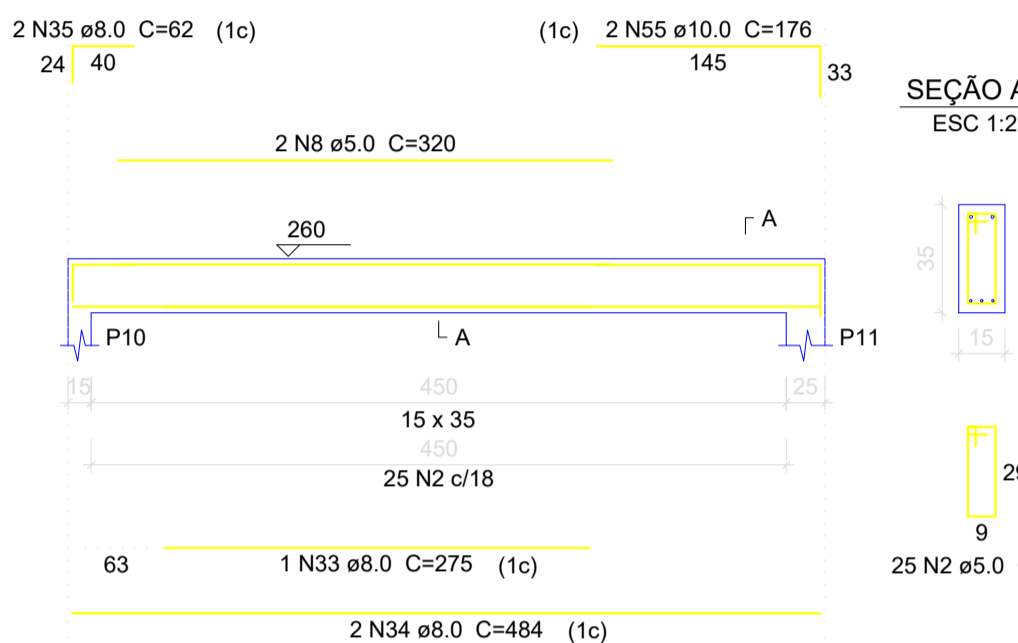
V5 ESC 1:50



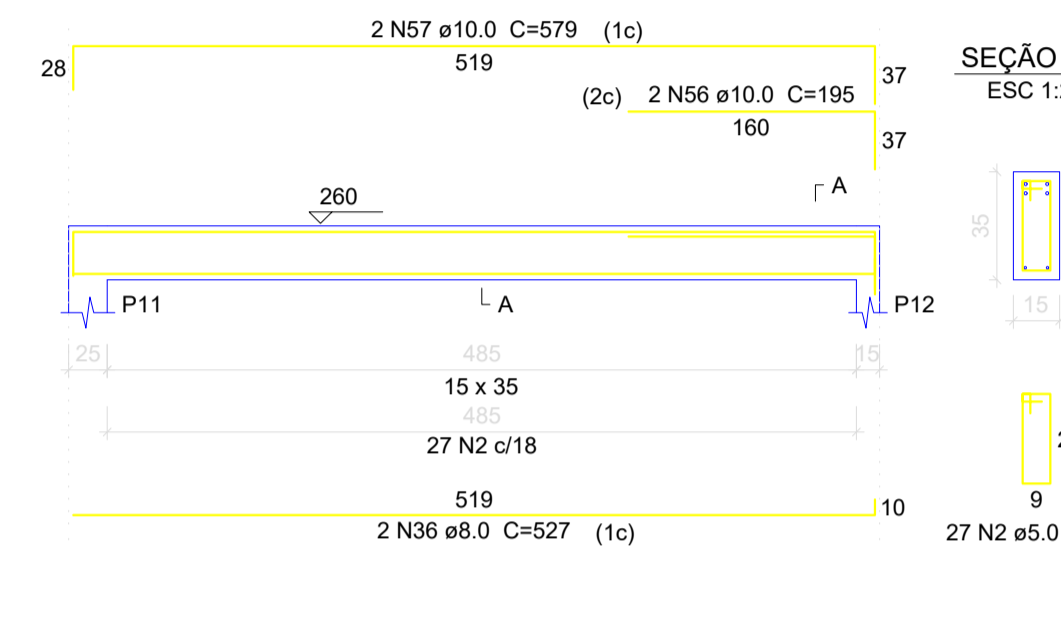
V6 ESC 1:50



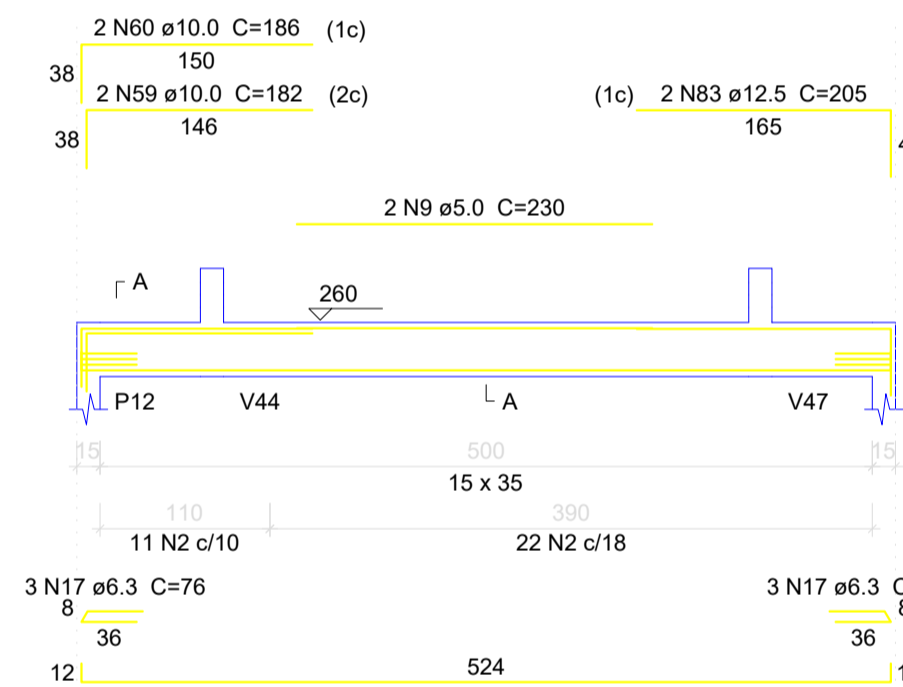
V7 ESC 1:50



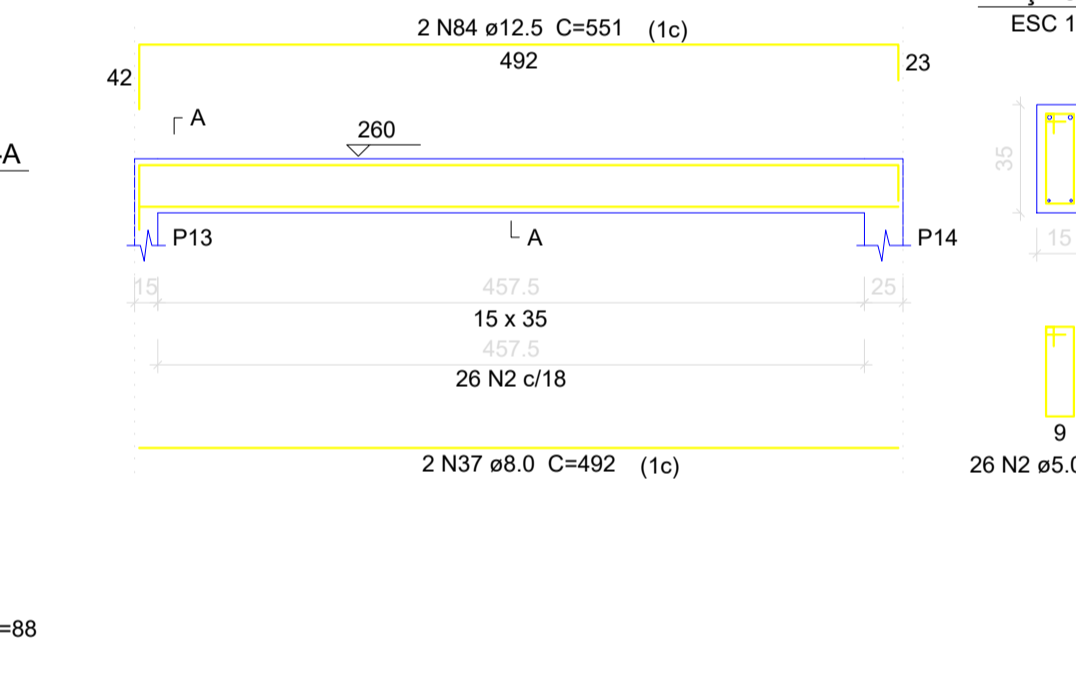
V8 ESC 1:50



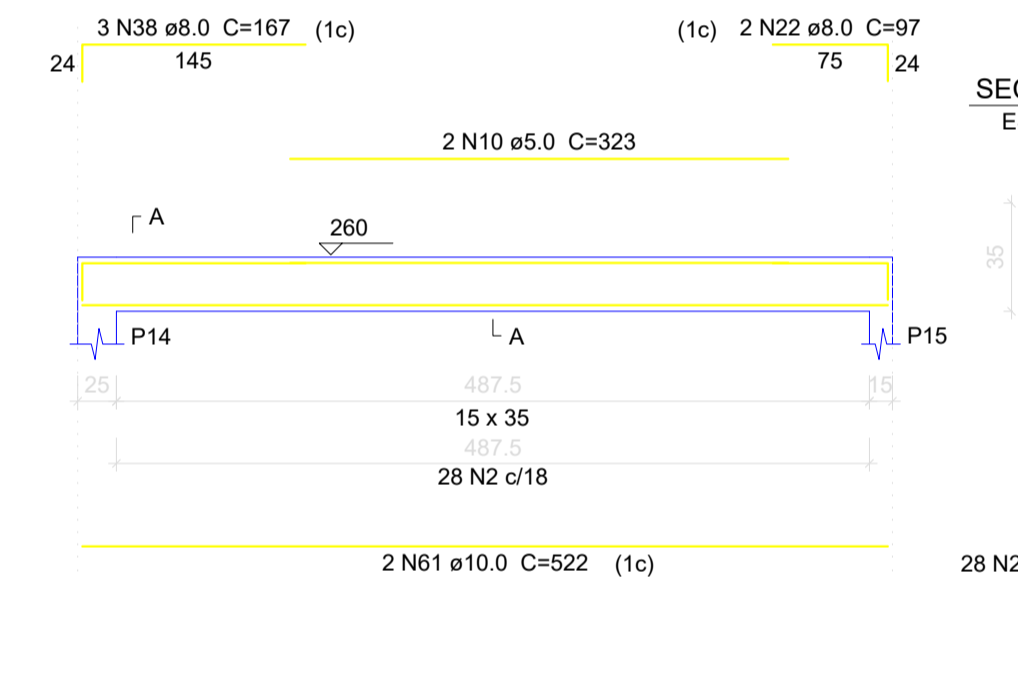
V9 ESC 1:50



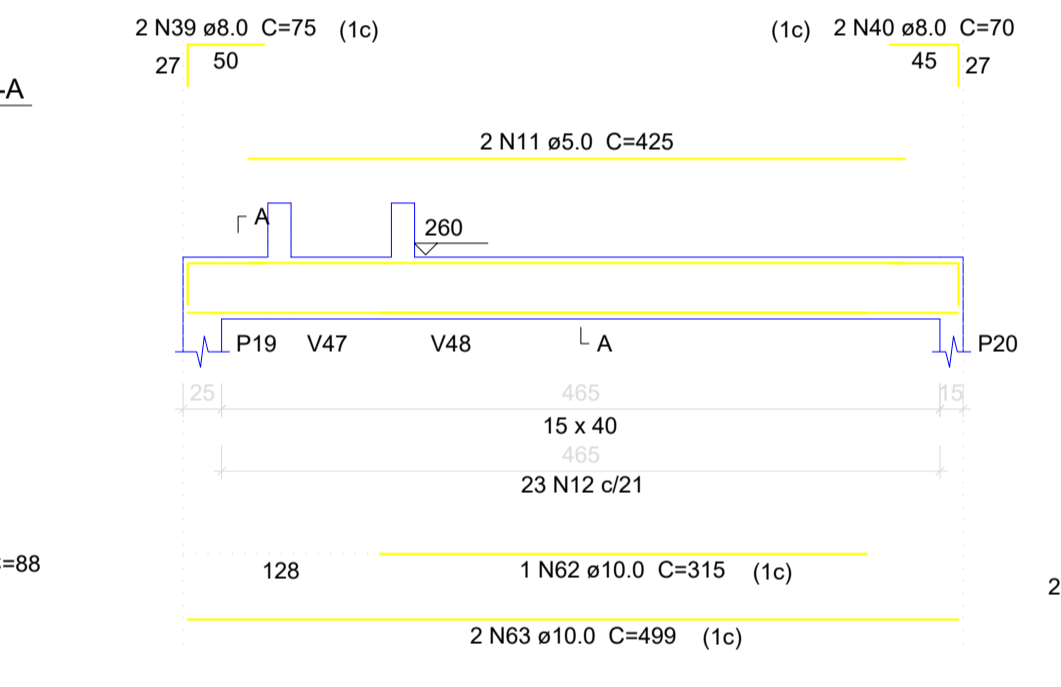
V10 ESC 1:50



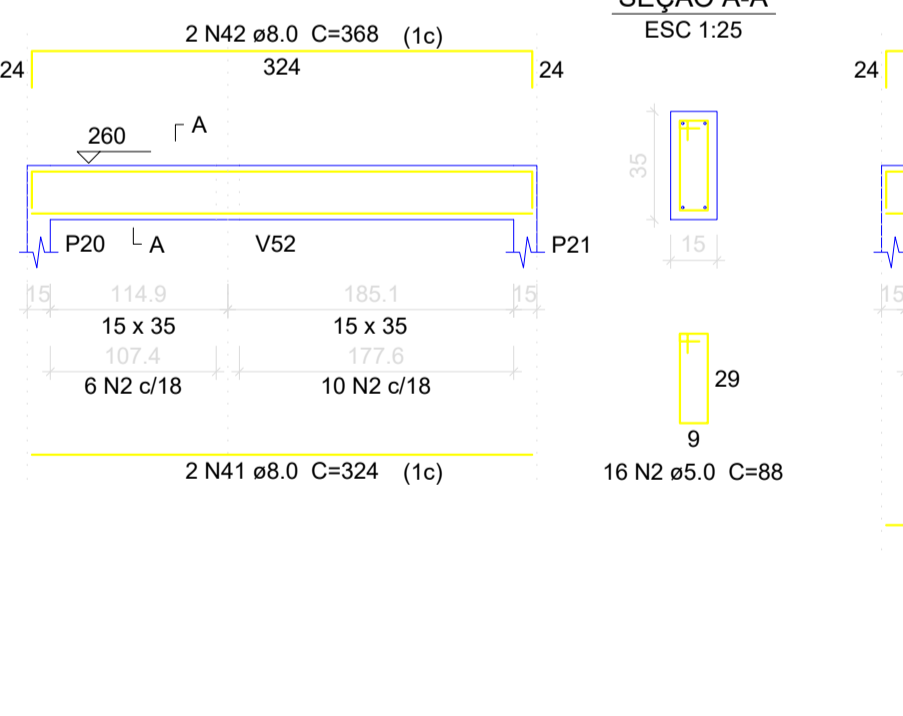
V11 ESC 1:50



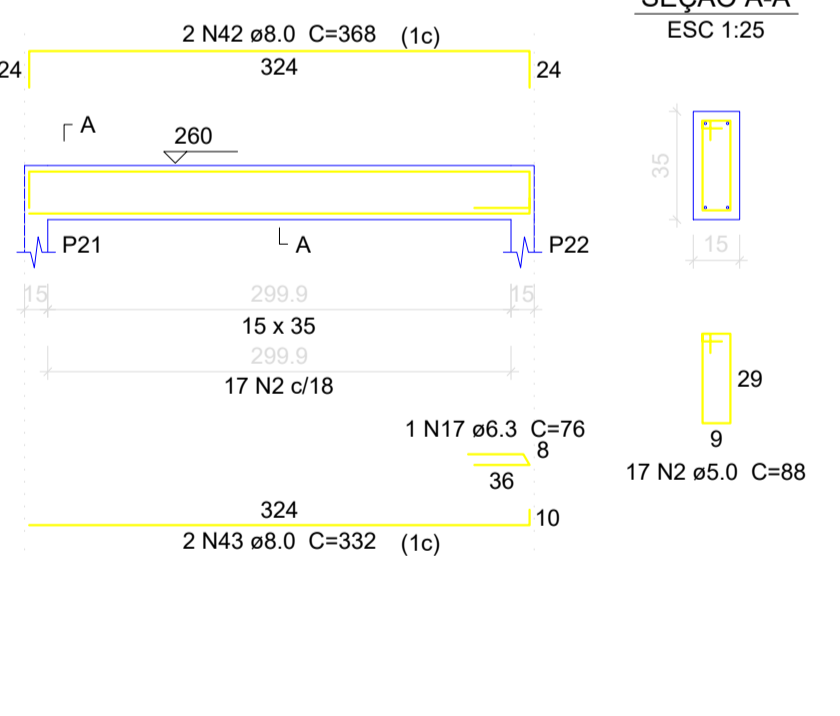
V12 ESC 1:50



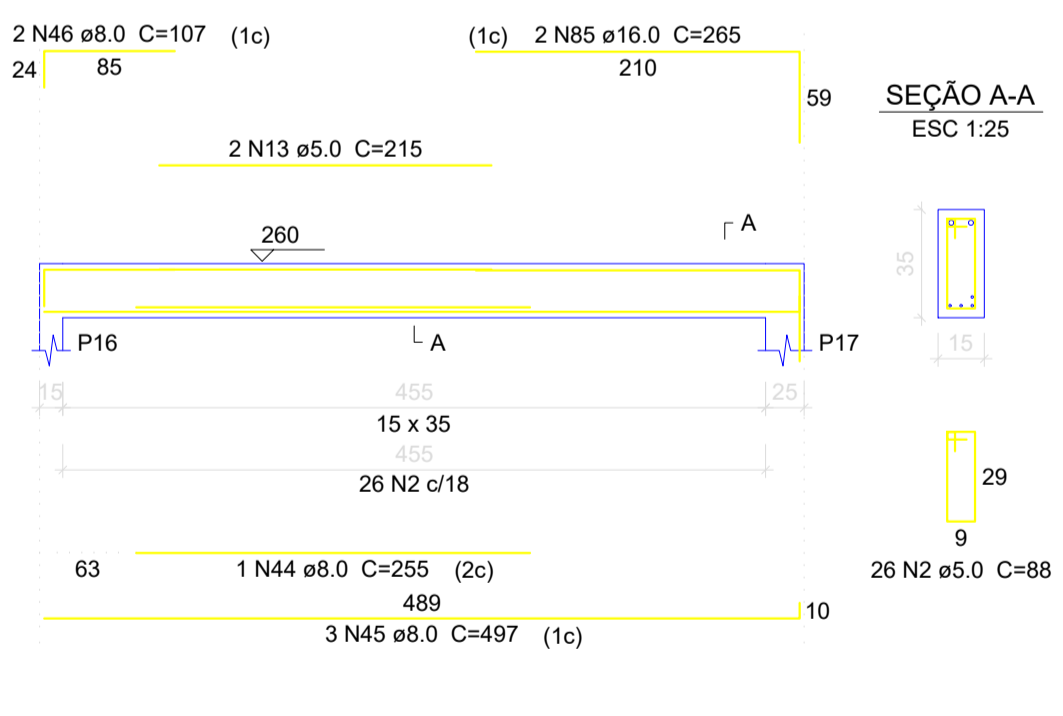
V13 ESC 1:50



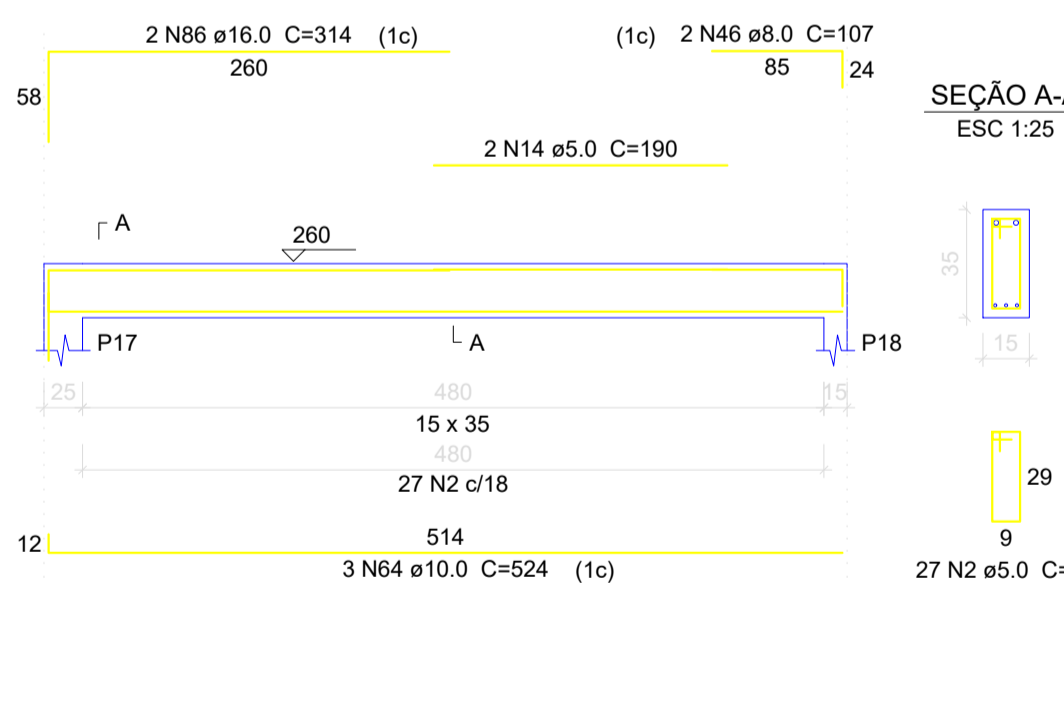
V14 ESC 1:50



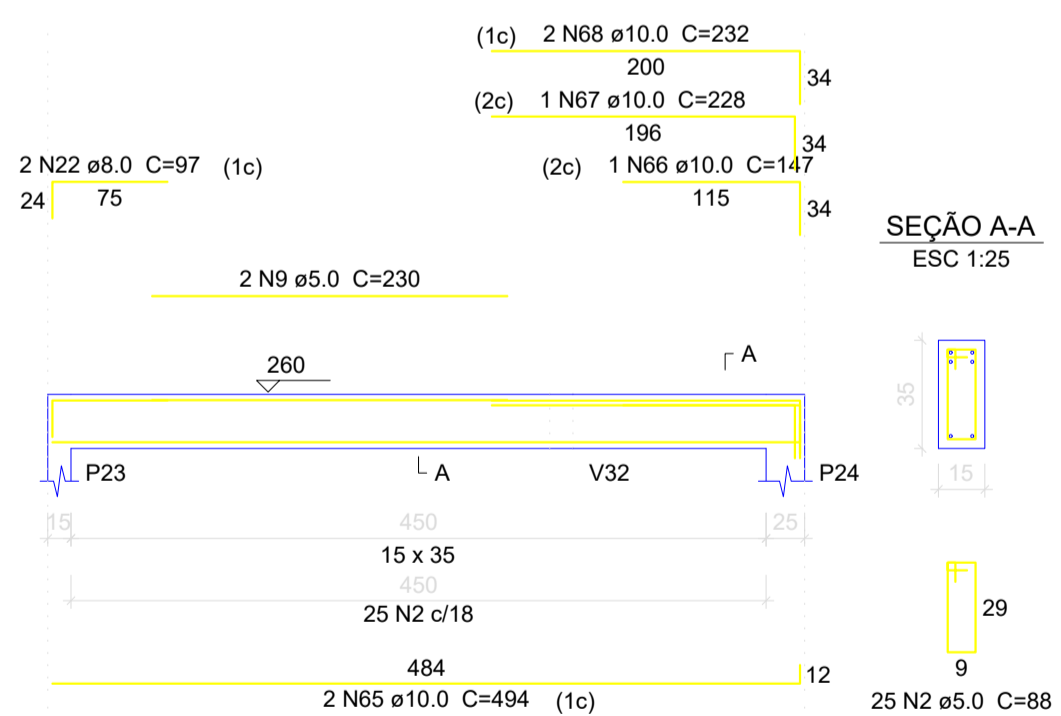
V15 ESC 1:50



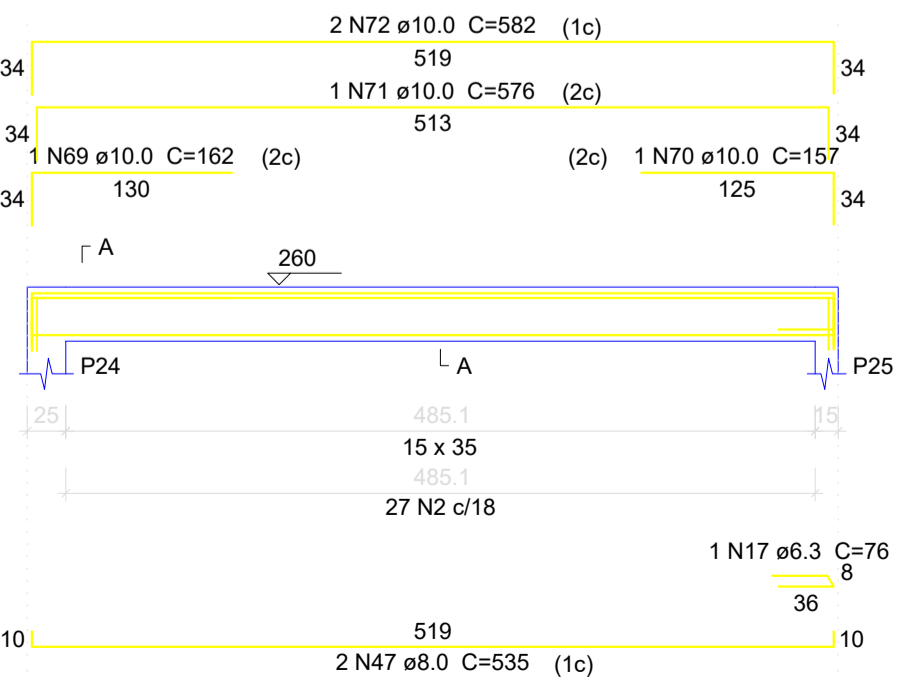
V16 ESC 1:50



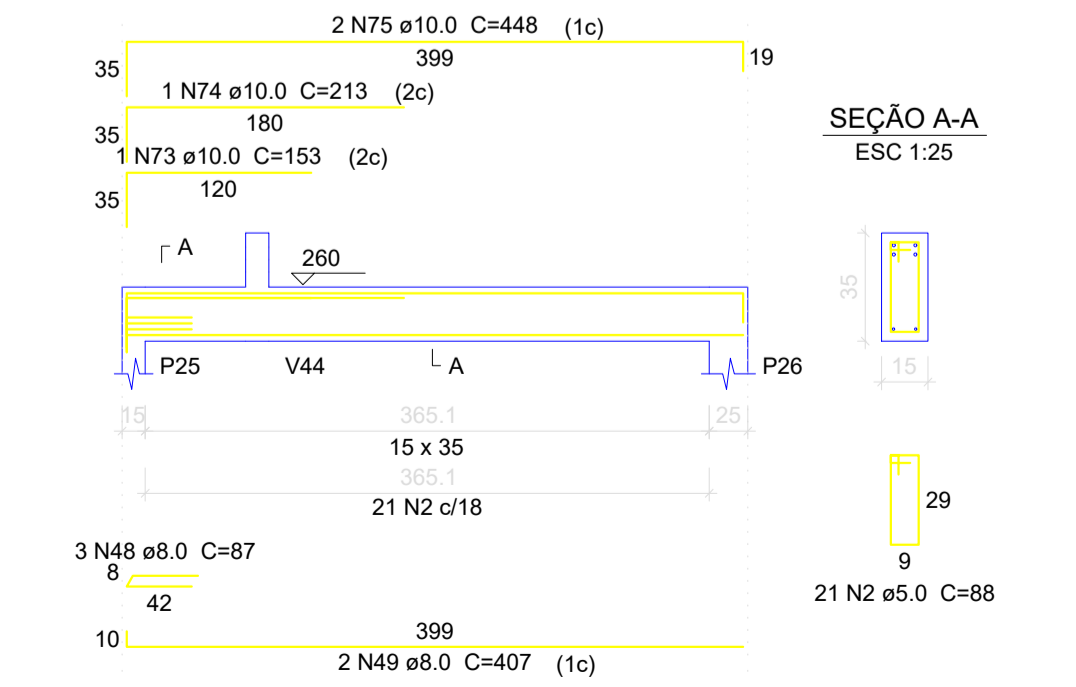
V17 ESC 1:50



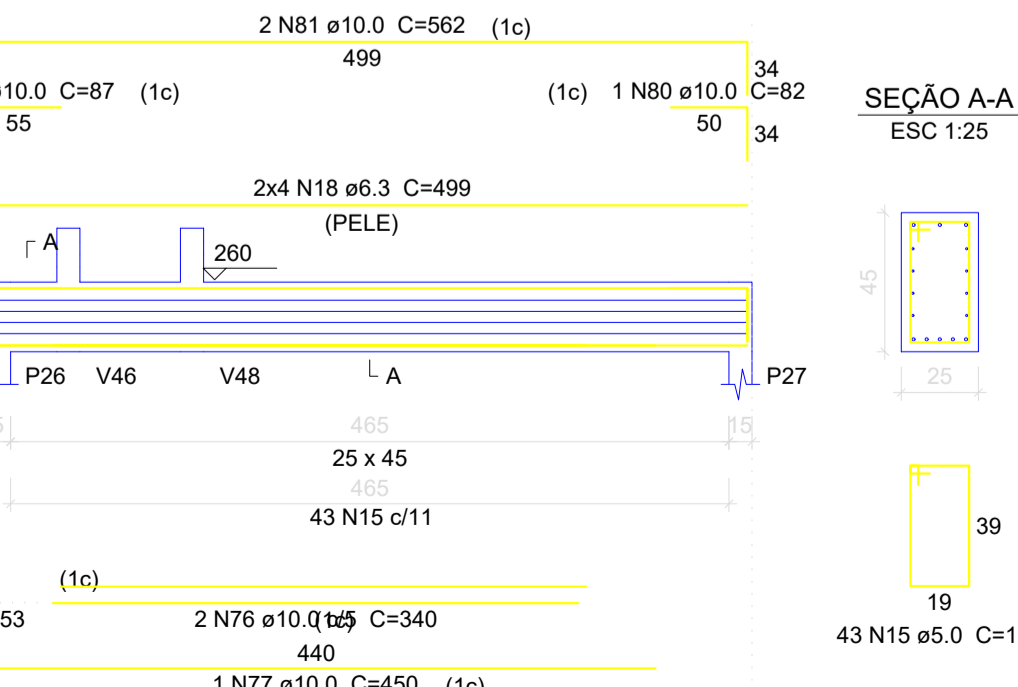
V18 ESC 1:50



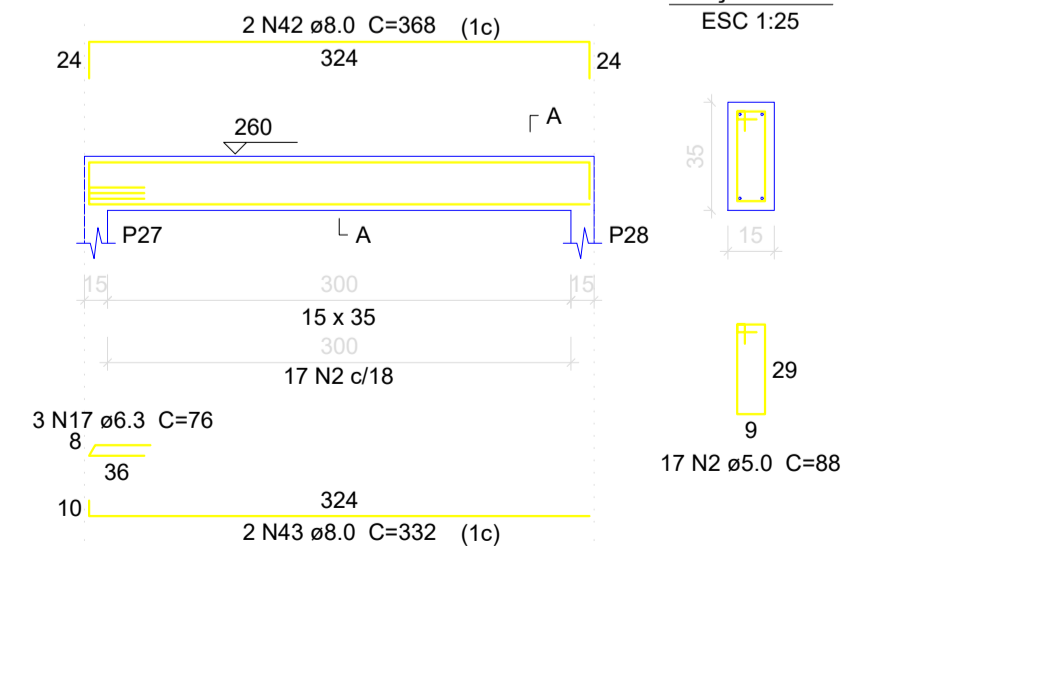
V19 ESC 1:50



V20 ESC 1:50



V21 ESC 1:50



Relação do aço

Table listing steel reinforcement specifications including AÇO (CA60, CA50), N (number of bars), DIAM (diameter), Q (quantity), UNIT (unit), and C.TOTAL (total weight).

Resumo do aço

Summary table for steel reinforcement showing AÇO, DIAM, C.TOTAL, and PESO + 10% (weight with 10% allowance).

Vol. de concreto total (C-25) = 5,62 m³
Área de forma total = 87,53 m²

Project information block including logo of UEMS, client name (UNIVERSIDADE ESTADUAL DE MATO GROSSO DO SUL), project title (Laboratório de Solos - Mundo Novo), structural type (ESTRUTURAL), location (BR 163 MUNDO NOVO - MS), author (MUNDO NOVO - MS), and other technical details.