

**Relação do aço**

ACO	N	DIAM	Q	UNID	C TOTAL
CA50	1	5.0	122	38	2578
CA50	2	8.0	4	280	2788
CA50	3	8.0	4	360	3568
CA50	4	8.0	4	360	3568
CA50	5	8.0	4	360	3568

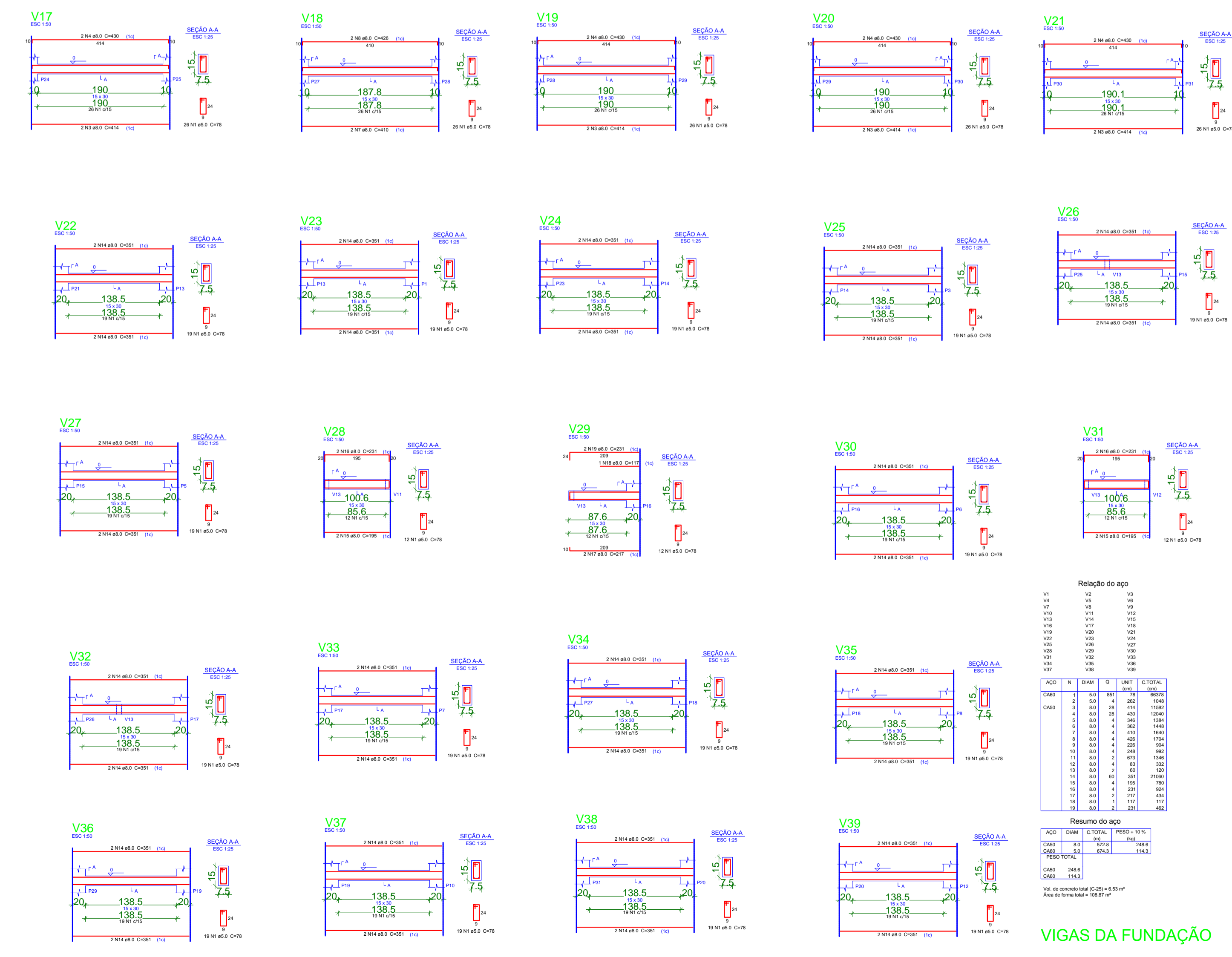
  

**Resumo do aço**

ACO	DIAM	C TOTAL	PESO 10%
CA50	5.0	38	36.1
CA50	8.0	280	36.1
CA50	8.0	360	36.1
CA50	8.0	360	36.1
CA50	8.0	360	36.1

Vol de concreto (C-25) = 0.96 m³  
Área de forma total = 15.92 m²

**VIGAS DA LAJE DA CAIXA D'ÁGUA**

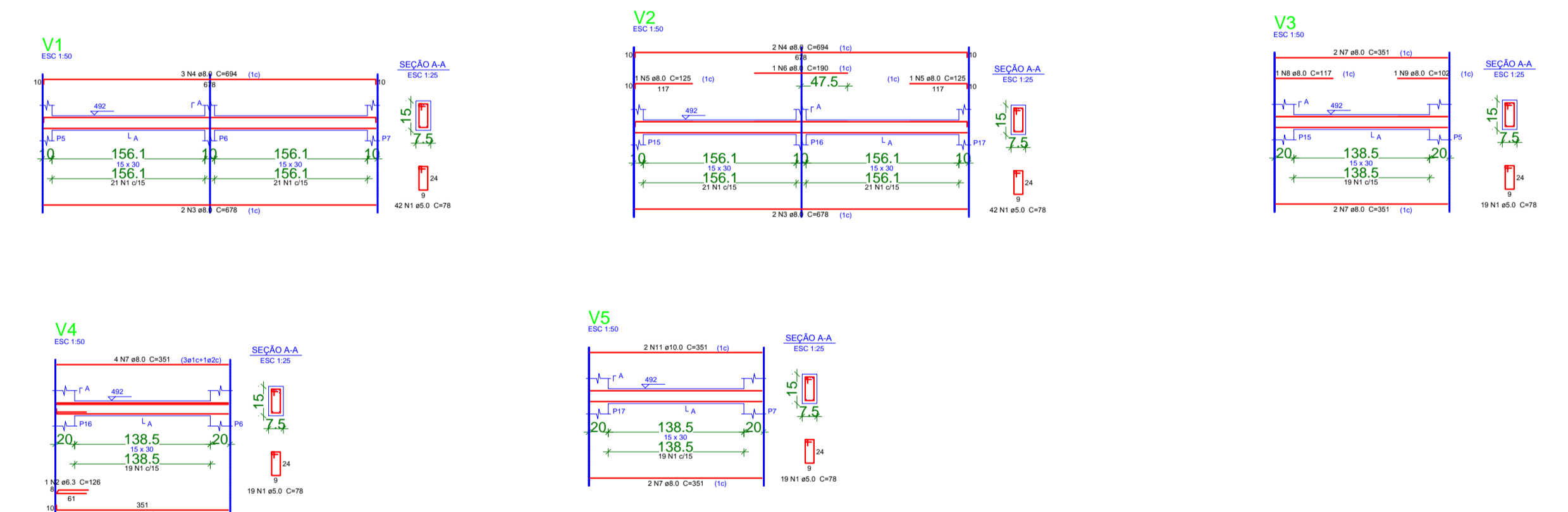


**Relação do aço**

ACO	N	DIAM	Q	UNID	C TOTAL
CA50	1	5.0	81	26	6674
CA50	2	5.0	28	26	1462
CA50	3	8.0	28	430	1050
CA50	4	8.0	28	430	1050
CA50	5	8.0	4	360	1448
CA50	6	8.0	4	360	1448
CA50	7	8.0	4	360	1448
CA50	8	8.0	4	360	1448
CA50	9	8.0	4	360	1448
CA50	10	8.0	4	360	1448
CA50	11	8.0	2	675	1048
CA50	12	8.0	2	675	1048
CA50	13	8.0	2	675	1048
CA50	14	8.0	2	675	1048
CA50	15	8.0	4	360	760
CA50	16	8.0	4	360	760
CA50	17	8.0	4	360	760
CA50	18	8.0	4	360	760
CA50	19	8.0	4	360	760
CA50	20	8.0	4	360	760
CA50	21	8.0	4	360	760
CA50	22	8.0	4	360	760
CA50	23	8.0	4	360	760
CA50	24	8.0	4	360	760
CA50	25	8.0	4	360	760
CA50	26	8.0	4	360	760
CA50	27	8.0	4	360	760
CA50	28	8.0	4	360	760
CA50	29	8.0	4	360	760
CA50	30	8.0	4	360	760
CA50	31	8.0	4	360	760
CA50	32	8.0	4	360	760
CA50	33	8.0	4	360	760
CA50	34	8.0	4	360	760
CA50	35	8.0	4	360	760
CA50	36	8.0	4	360	760
CA50	37	8.0	4	360	760
CA50	38	8.0	4	360	760
CA50	39	8.0	4	360	760
CA50	40	8.0	4	360	760
CA50	41	8.0	4	360	760
CA50	42	8.0	4	360	760
CA50	43	8.0	4	360	760
CA50	44	8.0	4	360	760
CA50	45	8.0	4	360	760
CA50	46	8.0	4	360	760
CA50	47	8.0	4	360	760
CA50	48	8.0	4	360	760
CA50	49	8.0	4	360	760
CA50	50	8.0	4	360	760
CA50	51	8.0	4	360	760
CA50	52	8.0	4	360	760
CA50	53	8.0	4	360	760
CA50	54	8.0	4	360	760
CA50	55	8.0	4	360	760
CA50	56	8.0	4	360	760
CA50	57	8.0	4	360	760
CA50	58	8.0	4	360	760
CA50	59	8.0	4	360	760
CA50	60	8.0	4	360	760
CA50	61	8.0	4	360	760
CA50	62	8.0	4	360	760
CA50	63	8.0	4	360	760
CA50	64	8.0	4	360	760
CA50	65	8.0	4	360	760
CA50	66	8.0	4	360	760
CA50	67	8.0	4	360	760
CA50	68	8.0	4	360	760
CA50	69	8.0	4	360	760
CA50	70	8.0	4	360	760
CA50	71	8.0	4	360	760
CA50	72	8.0	4	360	760
CA50	73	8.0	4	360	760
CA50	74	8.0	4	360	760
CA50	75	8.0	4	360	760
CA50	76	8.0	4	360	760
CA50	77	8.0	4	360	760
CA50	78	8.0	4	360	760
CA50	79	8.0	4	360	760
CA50	80	8.0	4	360	760
CA50	81	8.0	4	360	760
CA50	82	8.0	4	360	760
CA50	83	8.0	4	360	760
CA50	84	8.0	4	360	760
CA50	85	8.0	4	360	760
CA50	86	8.0	4	360	760
CA50	87	8.0	4	360	760
CA50	88	8.0	4	360	760
CA50	89	8.0	4	360	760
CA50	90	8.0	4	360	760
CA50	91	8.0	4	360	760
CA50	92	8.0	4	360	760
CA50	93	8.0	4	360	760
CA50	94	8.0	4	360	760
CA50	95	8.0	4	360	760
CA50	96	8.0	4	360	760
CA50	97	8.0	4	360	760
CA50	98	8.0	4	360	760
CA50	99	8.0	4	360	760
CA50	100	8.0	4	360	760

Vol de concreto (C-25) = 5.53 m³  
Área de forma total = 159.77 m²

**VIGAS DA FUNDAÇÃO**



**Relação do aço**

ACO	N	DIAM	Q	UNID	C TOTAL
CA50	1	5.0	143	78	10588
CA50	2	8.0	4	278	2712
CA50	3	8.0	4	278	2712
CA50	4	8.0	4	278	2712
CA50	5	8.0	4	278	2712
CA50	6	8.0	4	278	2712
CA50	7	8.0	4	278	2712
CA50	8	8.0	4	278	2712
CA50	9	8.0	4	278	2712
CA50	10	8.0	4	278	2712
CA50	11	8.0	4	278	2712
CA50	12	8.0	4	278	2712
CA50	13	8.0	4	278	2712
CA50	14	8.0	4	278	2712
CA50	15	8.0	4	278	2712
CA50	16	8.0	4	278	2712
CA50	17	8.0	4	278	2712
CA50	18	8.0	4	278	2712
CA50	19	8.0	4	278	2712
CA50	20	8.0	4	278	2712
CA50	21	8.0	4	278	2712
CA50	22	8.0	4	278	2712
CA50	23	8.0	4	278	2712
CA50	24	8.0	4	278	2712
CA50	25	8.0	4	278	2712
CA50	26	8.0	4	278	2712
CA50	27	8.0	4	278	2712
CA50	28	8.0	4	278	2712
CA50	29	8.0	4	278	2712
CA50	30	8.0	4	278	2712
CA50	31	8.0	4	278	2712
CA50	32	8.0	4	278	2712
CA50	33	8.0	4	278	2712
CA50	34	8.0	4	278	2712
CA50	35	8.0	4	278	2712
CA50	36	8.0	4	278	2712
CA50	37	8.0	4	278	2712
CA50	38	8.0	4	278	2712
CA50	39	8.0	4	278	2712
CA50	40	8.0	4	278	2712
CA50	41	8.0	4	278	2712
CA50	42	8.0	4	278	2712
CA50	43	8.0	4	278	2712
CA50	44	8.0	4	278	2712
CA50	45	8.0	4	278	2712
CA50	46	8.0	4	278	2712
CA50	47	8.0	4	278	2712
CA50	48	8.0	4	278	2712
CA50	49	8.0	4	278	2712
CA50	50	8.0	4	278	2712
CA50	51	8.0	4	278	2712
CA50	52	8.0	4	278	2712
CA50	53	8.0	4	278	2712
CA50	54	8.0	4	278	2712
CA50	55	8.0	4	278	2712
CA50	56	8.0	4	278	2712
CA50	57	8.0	4	278	2712
CA50	58	8.0	4	278	2712
CA50	59	8.0	4	278	2712
CA50	60	8.0	4	278	2712
CA50	61	8.0	4	278	2712
CA50	62	8.0	4	278	2712
CA50	63	8.0	4	278	2712
CA50	64	8.0	4	278	2712
CA50	65	8.0	4	278	2712
CA50	66	8.0	4	278	2712
CA50	67	8.0	4	278	2712
CA50	68	8.0	4	278	2712
CA50	69	8.0	4	278	2712
CA50	70	8.0	4	278	2712
CA50	71	8.0	4	278	2712
CA50	72	8.0	4	278	2712
CA50	73	8.0	4	278	2712
CA50	74	8.0	4	278	2712
CA50	75	8.0	4	278	2712
CA50	76	8.0	4	278	2712
CA50	77	8.0	4	278	2712
CA50	78	8.0	4	278	2712
CA50	79	8.0	4	278	2712
CA50	80	8.0	4	278	2712
CA50	81	8.0	4	278	2712
CA50	82	8.0	4	278	2712
CA50	83	8.0	4	278	2712
CA50	84	8.0	4	278	2712
CA50	85	8.0	4	278	2712
CA50	86	8.0	4	278	2712
CA50	87	8.0	4	278	2712
CA50	88	8.0	4	278	2712
CA50	89				